

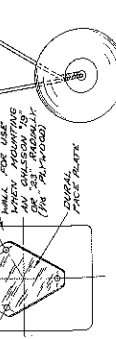
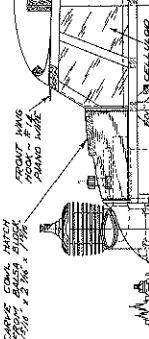
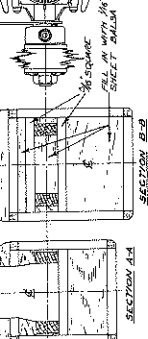
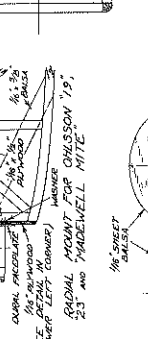
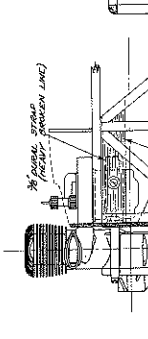
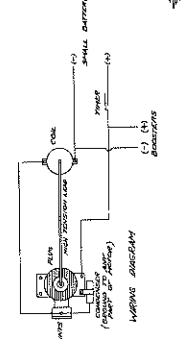
THE "SPOOK 40"
 Wingspan 40 in. Flight Weight - 13 oz.
 Motor with any Class "X" or "B" Engine.
 Original Design by - Barney Switzer and Vonn May
 Drawn and Traced by - Vonn May
 Checked by - Barney Switzer and Stuart Lewis

ABOUT AIRFOIL: DO NOT CUT AT POINT SHOWN ON SIDE VIEW. THE AIRFOIL IS TO BE CUT FROM A FULL SIZE PHOTO COPY OF THE AIRFOIL. PUT IT ON A STRAIGHT LINE. A PIECE OF WOOD ABOUT 1/8" THICK UNDER THE AIRFOIL. CUT FROM T.E. AND ONE ENDING A LITTLE MORE POWER MUST EXCEED TO THE OFF SET TIMER FOR NOT LESS THAN 10 AND NOT MORE THAN 20 SECONDS. ADJUST POWER TO GET THE CIRCLE INCREASING FROM 10 TO 20 SECONDS. INCREASE DOWN THRUST UNTIL SHIP CAN FLY ON FULL POWER. SHIP SHOULD CIRCLE TO LEFT UNDER POWER. IF DO NOT FLY ON THIS AS IT WOULD BE NECESSARY TO REVERSE ENGINE FOR THE SPEED OF THE PLANE. THE WING CIRCLE IS ONE THAT IS TRAIT ENGINE FOR THE SPEED OF THE PLANE TO PUT IT INTO A GLIDE WITHOUT A STALL AND SHIP. TWO TIGHT A LEFT CIRCLE TO BE MADE AND TWO TIGHT CIRCLES TO RIGHT. ADJUSTABLE. MAKE ONE ONE ADJUSTMENT BETWEEN PLANTS.



THIS KIT MANUFACTURED BY
MODEL CRAFT
 2006 S. SPRINGWOOD AVENUE
 SAN ANGELES, CALIFORNIA

WING TIP DETAILS:
 CUT THIS FROM PRINTED SHEET AND GLUE TO FOLLOWING TOP AND SOLE Balsa. SAND BOTTOM WITH 1000 GRIT SAND PAPER AND TIP SERVICE ON THIS WING TIP. SAND THE END ROSTER OF THE TIP CURVING DOWN. IF DESIRED THE CHORDARY TIP OF THE WING IS USE.



compared to 1/4 oz. allotment) produced equivalent times because of the afternoon thermal activity.

The perpetual trophy for this event (called the Pond Perpetual) really should have its name changed to the "Polack" trophy, as first Ed Rangus would win it, tote it to the west coast, then Wallock would win and have to cart it back to the east (based on the rotating Champs sites). Although Wallock did win this event with his superb Nimbus, he was challenged very closely by Nick Sanford. Almost a repeat performance of three years ago! Up to the very last minute of the contest, the winner of the event was in doubt.

Continued on page 52



Gene Wallock "accompanies" his Super Cyke powered Nimbus for the first few feet of takeoff run. This flight lasted around 10 minutes.



Jim Adams releases his Forster 29 powered Pacer, a Sal Taibi design.



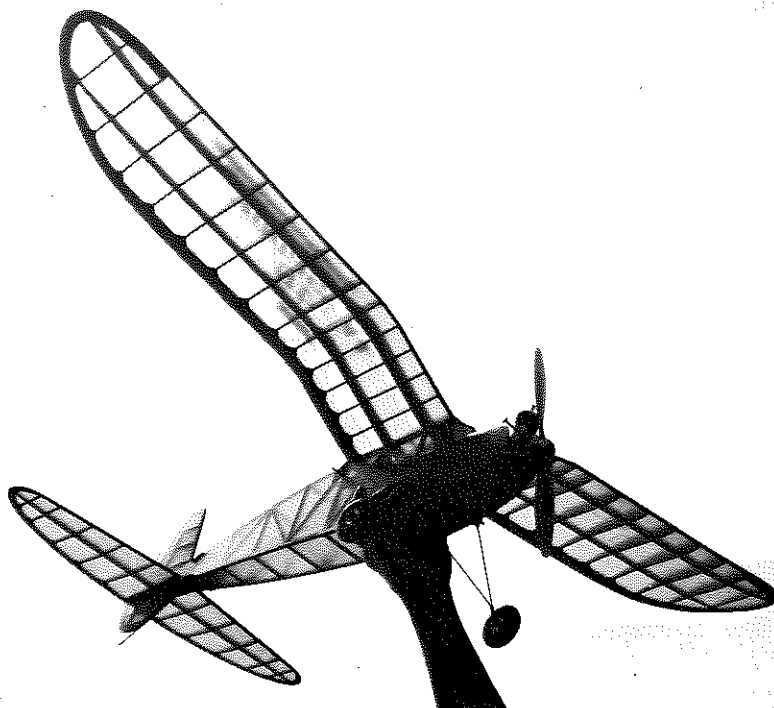
Larry Jenno with his Megow Ranger. Ship is powered by an O.S. glow engine converted to ignition by Bruce Chandler.

Old Timer Model of the Month; MODEL CRAFT'S "SPOOK 48." Reproduced from the original kit plans, provided by Phil Bernhardt.

● Although the Spook did not appear as a kit until the Spring of 1940, it can be proven that the prototype was flying in competition prior to Dec. 31, 1938, which qualifies it as an Antique. This information comes from Barney Snyder, co-designer of the Spook, along with John Muir, and then owner of Modelcraft, which manufactured the kit.

The model in the photograph was built by Marge Bernhardt, Phil's mother, and is her third model, all Antiques. It is covered in orange silk and is powered by an Ohlsson .23, with a Tornado 9-4 prop. Engine has not yet been opened up to full power.

Entire fuselage, just ahead of the tail surfaces, is separated and hinged for the dethermalizer. ●



TO GET IT INTO A GLASS WITHOUT A STALL AND ONE TOO THIN A LEFT CIRCLE IS
 CHANGING TO A RIGHT CIRCLE AND THE OTHER TO A LEFT CIRCLE. MAKE ONLY ONE ADJUSTMENT
 BETWEEN RIGHTS.
 LOS ANGELES, CALIFORNIA