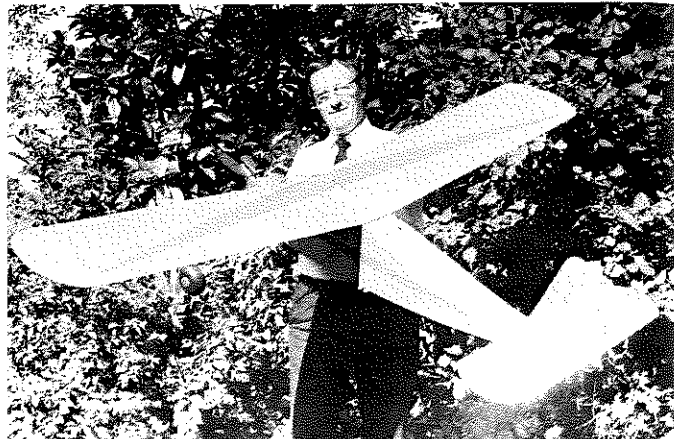


Bob Knutson was truly an innovator! His first canard, with Ohlsson .23, was built in 1940. Canard surface looks like a wing from a smaller model. Boom was vulnerable.



Alex Imrie, noted WW-I English writer, is also an O.T. flier, this Cloud Master being one of eight models in his stable.

"Enclosed find the latest plans of my hydro (twin pusher). they are better than the others, being the same machine you described."

Columnist's note: Many years later, Frank Zaic picked up this design and featured it in his 1938 Jasco Yearbook. If you are interested in possibly constructing a real antique, plans are available from John Pond O.T. Plan Service.

PLANS

Talking about plans, when this columnist went abroad to Europe, he visited Dave Baker, the impresario of Old Timers in Merrie Olde England. The writer was lucky to get about 20 old Czech gas and rubber plans. Some are

pretty nice designs. Big questions here is, do we have any interest from the readers to run one or two?

SINCERE CONDOLENCES

Just received word from Pete Vano, former SAM Speaks Editor, that Don Hartman has suffered the loss of his son. Don, as most of you know, has a heart as big as a barn and it is truly tough to express our feelings at a time like this.

Don's boy was finishing up at Arizona State in Aeronautics (Dad is a TWA Flight Engineer) and at the same time was doing quite a bit of flying. Glen took a crop dusting job in Mexico in a patrol bomber, misjudged a ridge and perished in the crash.

We all extend our sorrow to Don at a

time like this (right at Christmas) and wish him and his family the best of the New Year.

MORE BAD NEWS

Just heard Ray Bowles, former operator of PICO Model Shop in the thirties, now of Bishop, California, has gone into St. John's Hospital in Culver City for another operation. Hope he makes it okay.

SAM 41

George Wagner reports that enthusiasm for Old Timer activity is running high in San Diego and that SAM 41 is gaining members like a one-day sale. In short, this revival of the old San Diego

Continued on page 106

Aeronca

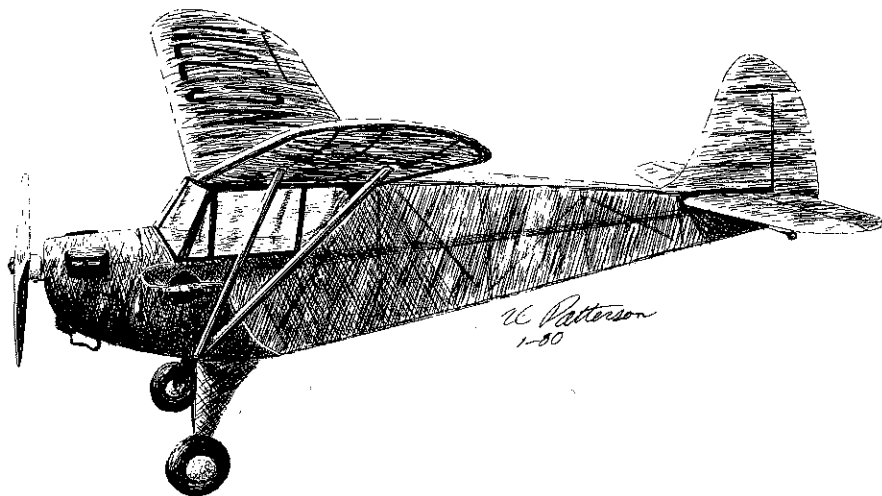
Tandem

OLD TIMER Model of the Month

Designed by: Ronnie Albert

Drawn by: Al Patterson

Text by: Phil Bernhardt



• Scale models rarely find their way into **RCMB** as the featured Old Timer, so this month we're presenting plans for a 48-inch Aeronca Tandem that appeared in the February 1942 issue of *Air Trails*. The model was designed by Ronnie Albert and was touted as being of contest caliber, although we doubt that anyone would want to pit one of these against a Ranger or Playboy or similar type model. (The climb must have been pretty rapid, though, as the original used an Ohlsson .23.) Instead, we thought the Aeronca would appeal to those looking for a good, realistic flying scale model that is also a genuine Old Timer.

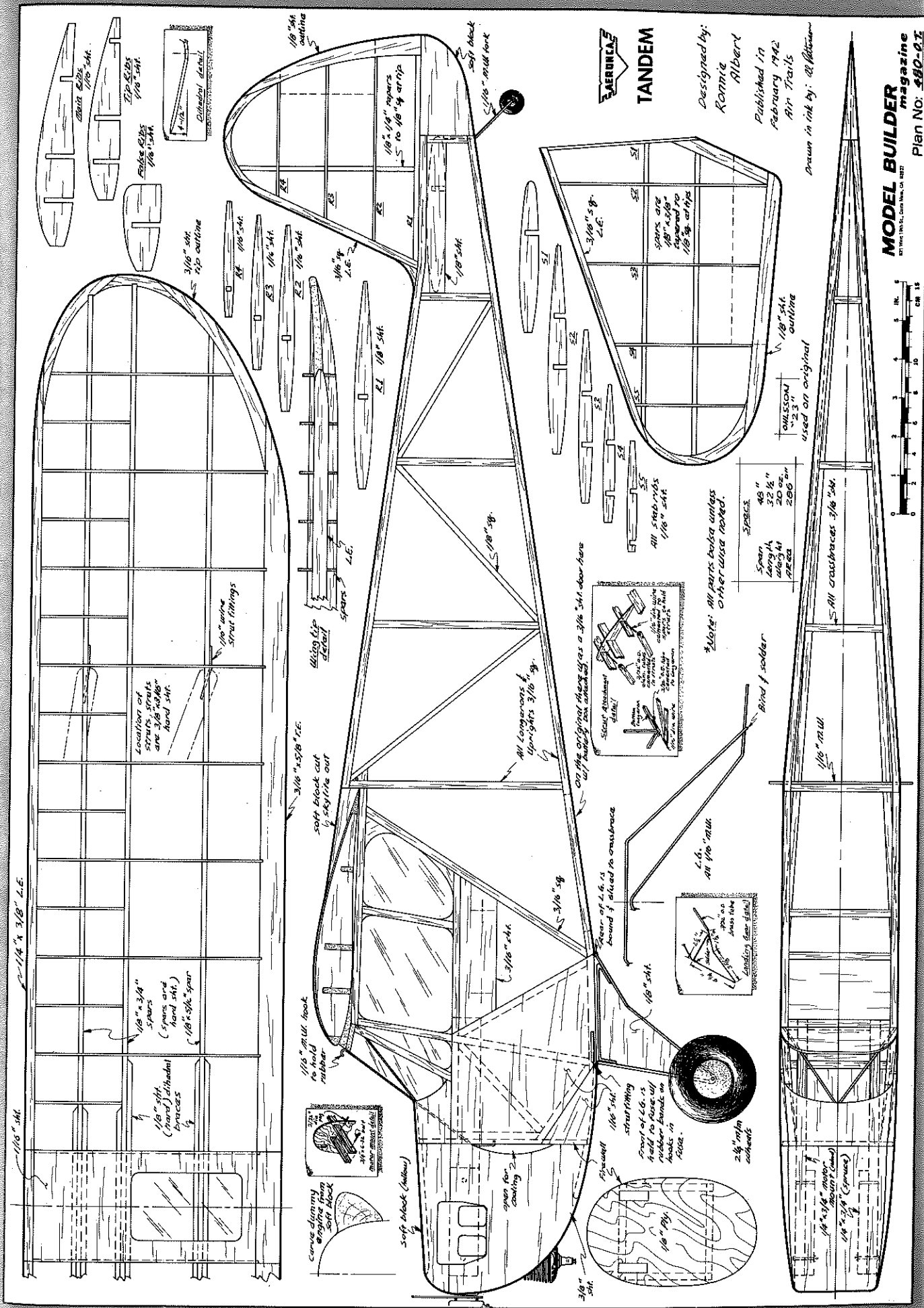
We tried to find some details on the

model's full-size counterpart, but didn't have much luck. All we know is that the real Aeronca Tandem (also called the Tandem Trainer) was built in 1940. Very few were made; the Aeronca factory concentrated instead on building L-3's and O-58 Defenders for the military. At least one full-size Tandem is active, having been restored in 1977.

The model Tandem utilizes very simple construction and would make a fine F/F sport model with a good .049 glow or .09 ignition engine. It would also be a fun little R/C job with three channels and an .09 or .10 in the nose. For control surfaces, try putting the elevator hinge line at the rear stab spar and the rudder

hinge line at the front of the tail block on the fuselage; this way the rudder can be continued to the bottom of the fuselage.

The original article included a separate sheet of drawings that showed how to adapt the model to control line. Basically it was similar to modern C/L linkage systems, but with a bellcrank rigged with rubber bands to return it to neutral in case the lines went slack and control was lost, hopefully keeping the model on an even keel until the panicking flier could sprint backwards and regain line tension. Just how much of a pullout he could make is questionable, as the recommended elevator throw was only 3/16 inch up and 1/8 inch down! •



LAERONCA
TANDEM

Designed by:
Ronnie Albert
Published in
February 1942
Air Trails
Drawn in ink by: Al Williams

MODEL BUILDER
magazine
Plan No. 580-01

SPACES	SPAN
48"	32 1/2"
20 sq. in.	20 sq. in.
2.66 sq. in.	2.66 sq. in.

*Note: All parts below unless otherwise noted.

