



"Rapid Rick" Sarpolus and his Bearcat.

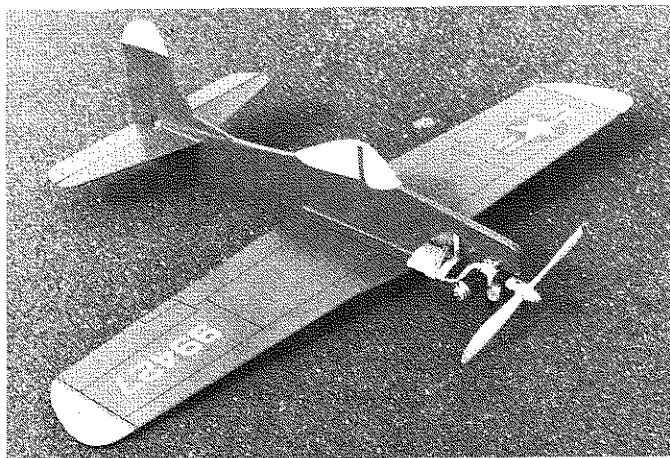


All sheet construction, very little shaping. Great for a beginning scratch builder.

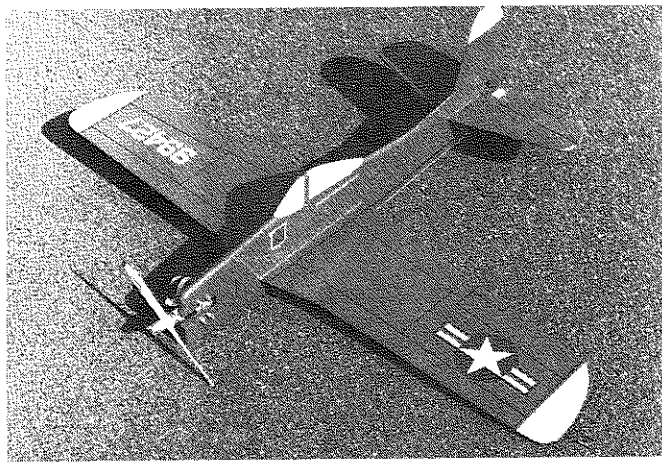
the Bearcat

Just right for the youngster who has a couple of kit-built 1/2A ships under his belt and wants to try scratch-building. It's built exactly like the "FLIP", which Dick also designed, and was published in our March 1976 issue. No instructions are really needed, but just in case, we'll include a reprint of the Flip article with each set of full size plans.

By DICK SARPOLUS



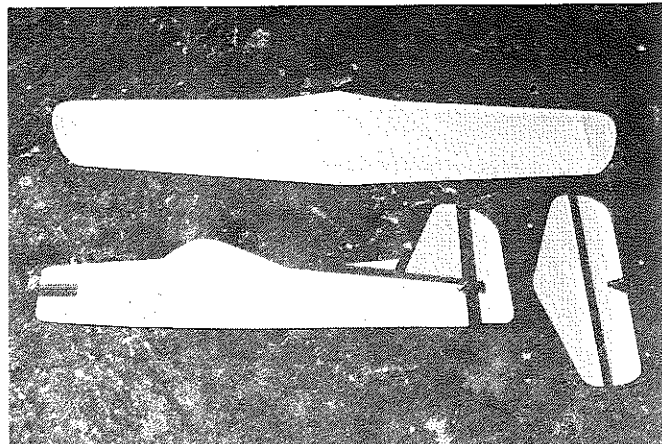
A Cox .049 Tee Dee provides the motive power. Perfect tank held on with wire hooks and rubber band. All 1/4 and 1/8 sheet construction.



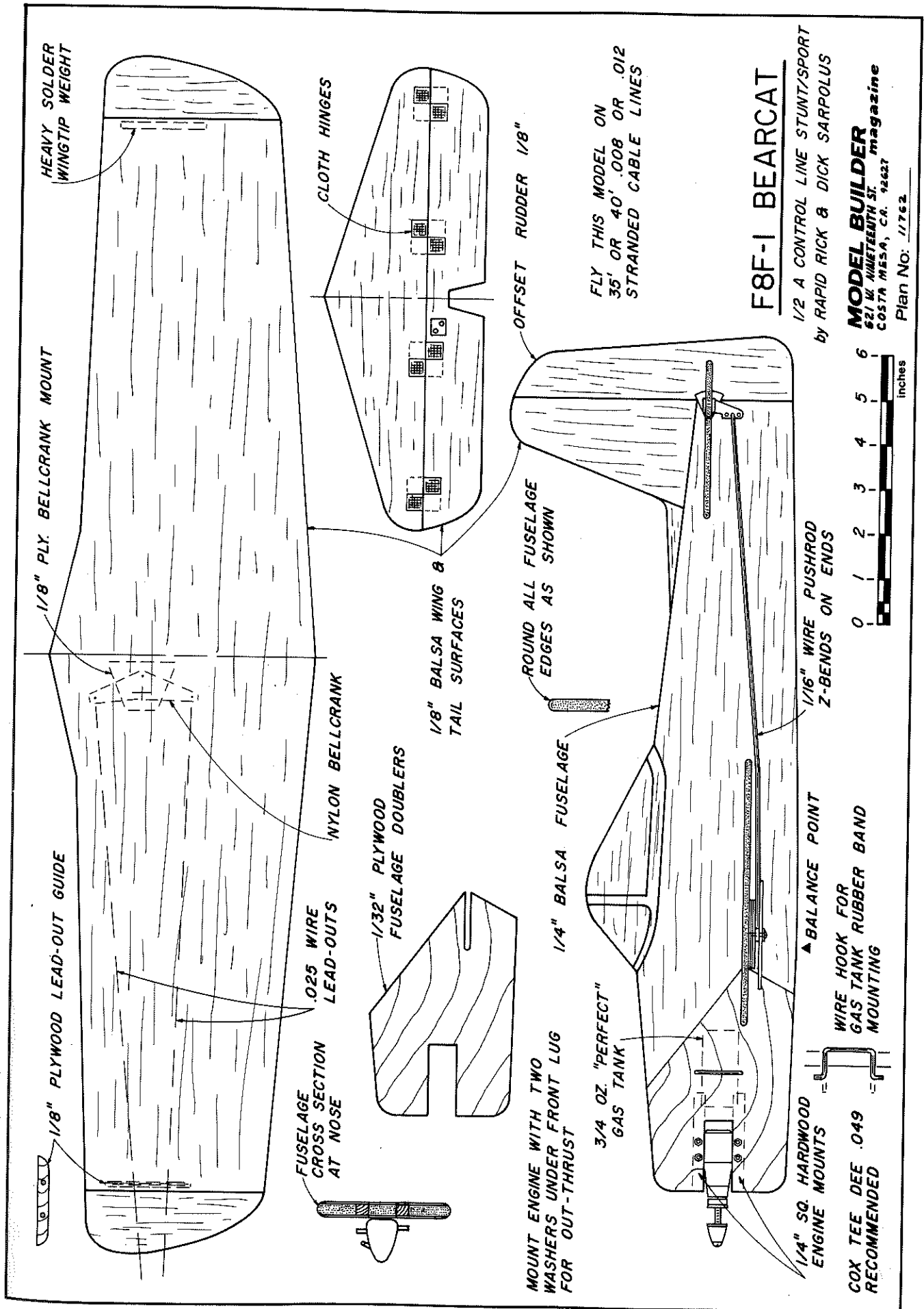
A little extra time with the painting and finishing makes the Bearcat just a little better than the usual "slaptogether" model.



Only time the designer gets to touch this model is during the launch. DON'T FLY NEAR OVERHEAD WIRES!!



Like we said in the "Sling Wing" article, make up a "kit" of the parts before you pick up the glue. It'll go together faster.



HEAVY SOLDER
WING TIP WEIGHT

1/8" PLY. BELLCRANK MOUNT

1/8" PLYWOOD LEAD-OUT GUIDE

FUSELAGE
CROSS SECTION
AT NOSE

.025 WIRE
LEAD-OUTS

NYLON BELLCRANK

1/32" PLYWOOD
FUSELAGE DOUBLERS

1/8" Balsa Wing &
Tail Surfaces

CLOTH HINGES

OFFSET RUDDER 1/8"

ROUND ALL FUSELAGE
EDGES AS SHOWN

1/4" Balsa FUSELAGE

3/4 OZ. "PERFECT"
GAS TANK

MOUNT ENGINE WITH TWO
WASHERS UNDER FRONT LUG
FOR OUT-THRUST

1/4" SQ. HARDWOOD
ENGINE MOUNTS

COX TEE DEE .049
RECOMMENDED

▲ BALANCE POINT
WIRE HOOK FOR
GAS TANK RUBBER BAND
MOUNTING

1/16" WIRE PUSHROD
Z-BENDS ON ENDS



FLY THIS MODEL ON
35' OR 40' .008 OR .012
STRANDED CABLE LINES

F8F-1 BEARCAT

1/2 A CONTROL LINE STUNT/SPORT
by RAPID RICK & DICK SARRPOLUS

MODEL BUILDER
621 W. HUNTEBETH ST.
COSTA MESA, CA. 92627

Plan No: 11762