

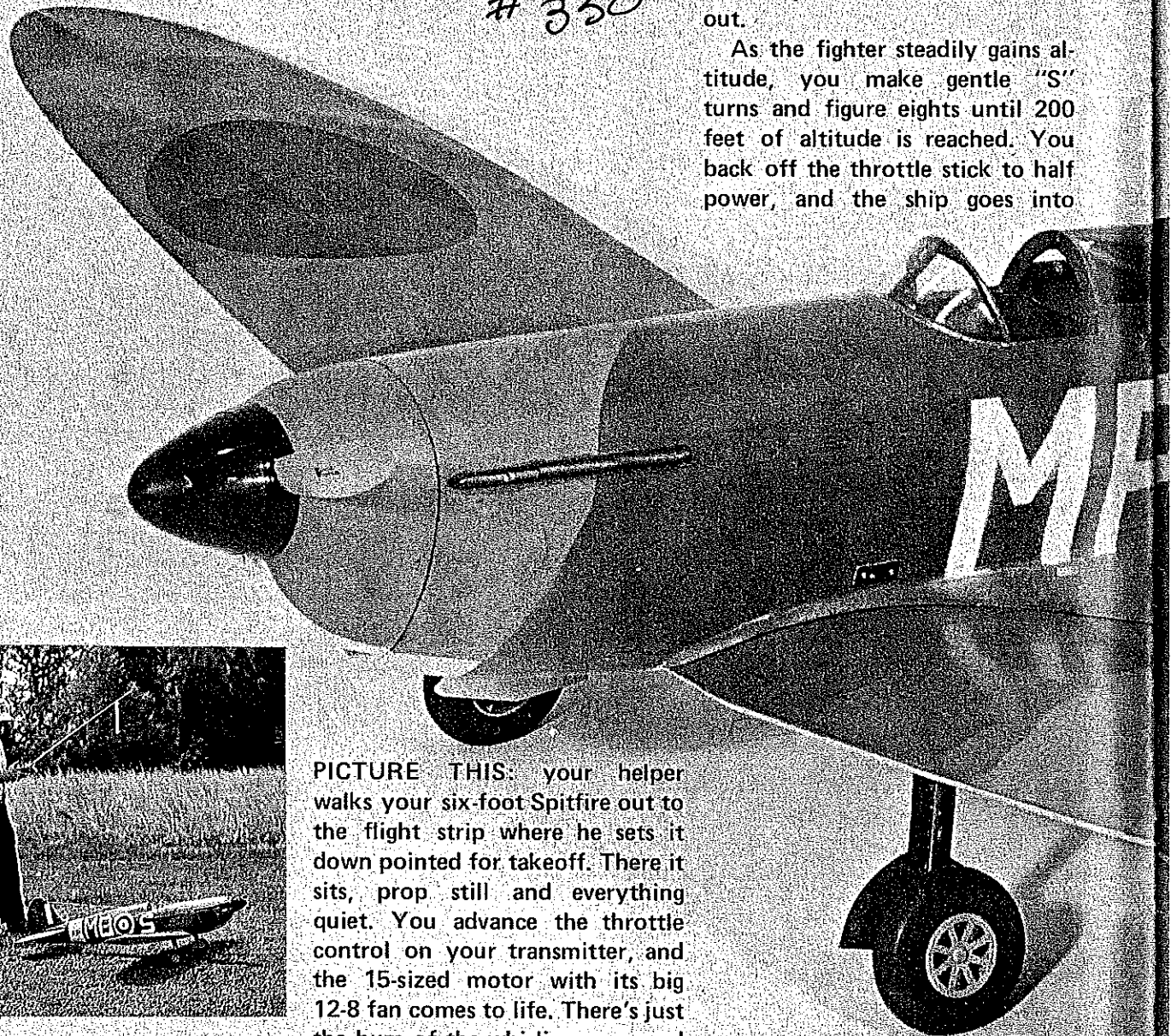
# ELECTRIC

## "The Spirit of Biggen Hill"

# 350

the runway—rather like a low-powered sport job—and lifts off smoothly into a shallow climb-out.

As the fighter steadily gains altitude, you make gentle "S" turns and figure eights until 200 feet of altitude is reached. You back off the throttle stick to half power, and the ship goes into



The geared Astro 15 fires up, and the takeoff roll begins. No flight line starting problems!

PICTURE THIS: your helper walks your six-foot Spitfire out to the flight strip where he sets it down pointed for takeoff. There it sits, prop still and everything quiet. You advance the throttle control on your transmitter, and the 15-sized motor with its big 12-8 fan comes to life. There's just the hum of the whirling prop, and the big bird runs smoothly down

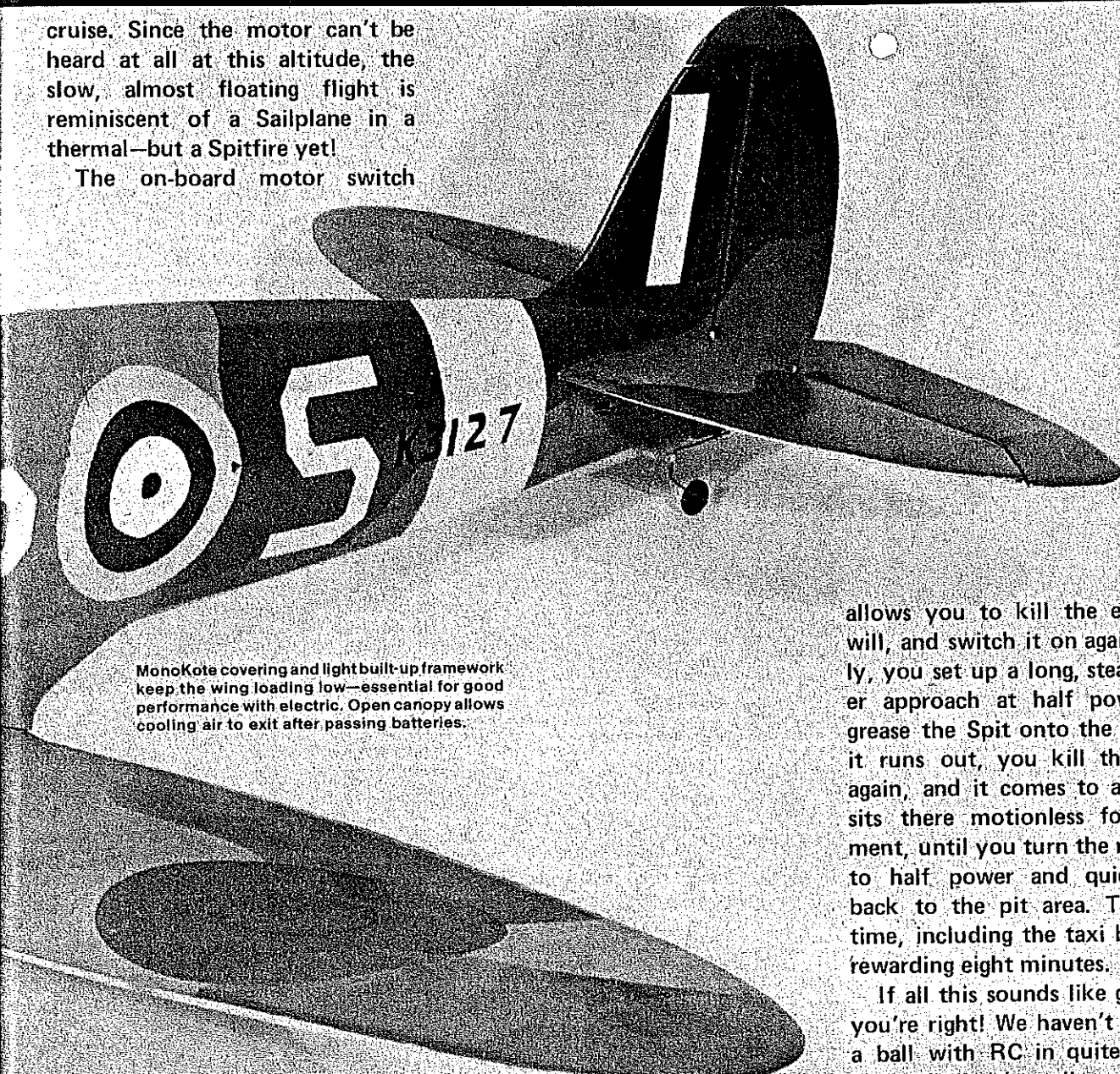
Electric-powered flight gets more practical every day. Here's the story of a happy marriage between a six-foot Spitfire (formerly .23 powered) and a geared 15 electric flight system. It works great. If you want to hear eyeballs snap at the flying field, shoot some silent touch-and-goes! ■ Don Srull

Photography by John Preston

# SPITFIRE

cruise. Since the motor can't be heard at all at this altitude, the slow, almost floating flight is reminiscent of a Sailplane in a thermal—but a Spitfire yet!

The on-board motor switch

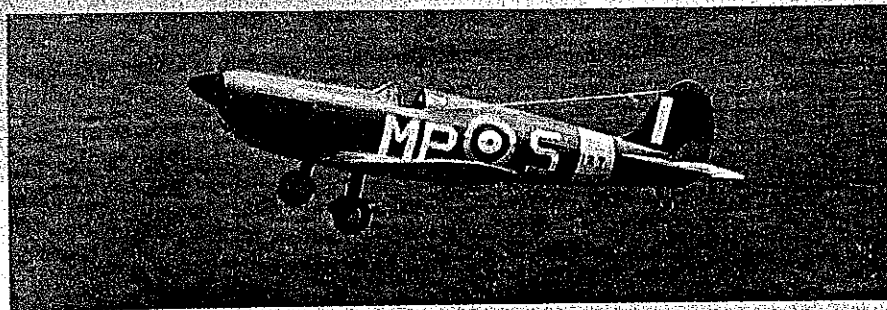


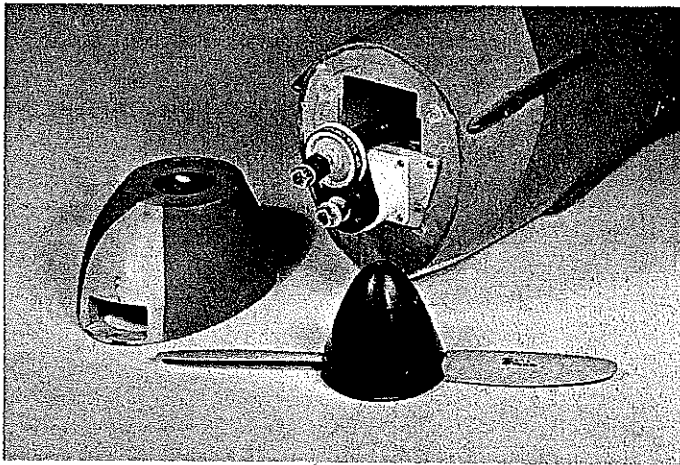
MonoKote covering and light built-up framework keep the wing loading low—essential for good performance with electric. Open canopy allows cooling air to exit after passing batteries.

allows you to kill the engine at will, and switch it on again. Finally, you set up a long, steady power approach at half power, and grease the Spit onto the grass. As it runs out, you kill the engine again, and it comes to a stop. It sits there motionless for a moment, until you turn the motor on to half power and quietly taxi back to the pit area. The flight time, including the taxi back, is a rewarding eight minutes.

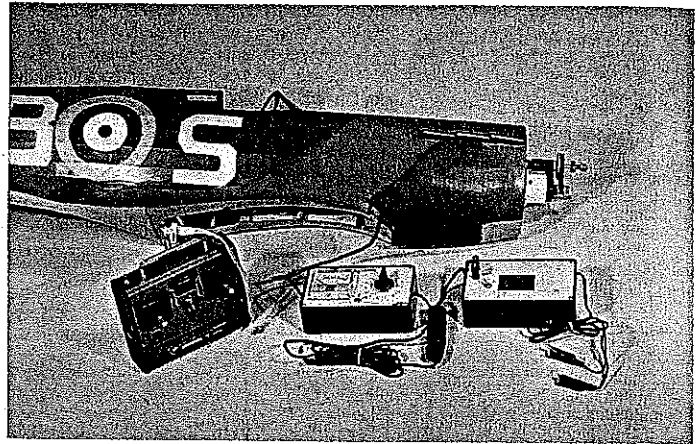
If all this sounds like great fun, you're right! We haven't had such a ball with RC in quite a while. Best of all, it's really quite easy. The power plant is electric—in this case an Astro Flight geared 15. The prototype model grosses a bit less than 5½ lb., and if built as shown in the plans it will work out at about 5 lb.

We were told by the experts that such a big and "heavy" fighter-type model probably

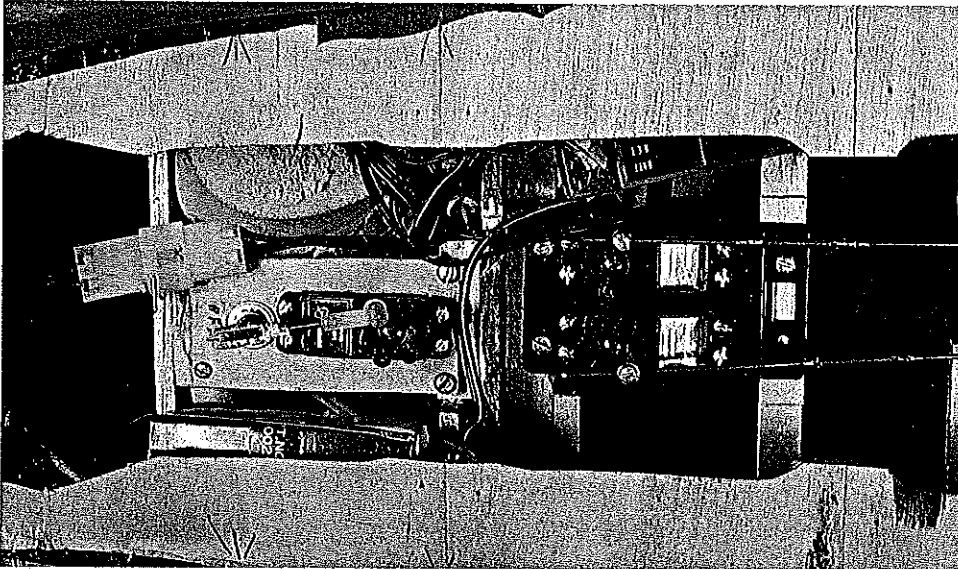




Cowl, spinner and prop are removed to show the simple installation of the motor and gear drive unit. The large hole in the firewall allows cooling air to flow past the motor and into the battery compartment



Ground support equipment needed to fly this 15-sized electric aircraft. Next to the transmitter is the charger, which has an ammeter to show charge current, and a timer to switch from fast to slow charge. The box on the right is a voltage booster which clips to your car battery. It raises the car's 12 volts to 24 for 15-minute charges.



Airtronics mini servos provide rudder, elevator and motor control. Servo-operated three-way switch on the left is the motor control. The middle position connects the battery to the motor through a dropping resistor for "cruise" speed; far right position gives full power.

would not fly on the Astro 15, and if it did, it would fly like a truck. Well, you can't compare this Spitfire to a glow-powered Falcon or Kadet, but electric power is an entirely different ball game.

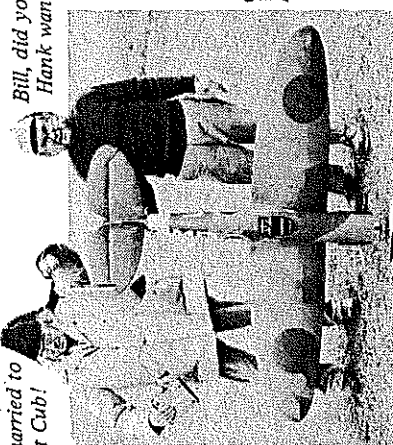
After the first five or six minutes of air time with such a graceful bird, we guarantee you'll feel a new kind of modeling thrill—different from any you've experienced before. Spectators and fellow fliers will stop to look; just watch their faces as you cut off power at altitude, glide in dead stick, then turn on power at the last moment and go around. One spectator (who was unmoved by other sights on this busy Sunday) walked over and knelt for a close look at the Spit after seeing it fly. He said under his breath, "The Spirit of Biggen Hill." Perhaps he had flown the real one from Biggen Hill during the Battle of Britain.

There's something of a story behind this model. Back in 1973 after my son Mark had learned to fly simple sport RC models, he wanted to build a Spitfire—a *big* Spitfire. The usual heavy RC Scale models of this type would have been beyond his capability to build and fly. A very light, simple version seemed appropriate, so I drew one, borrowing heavily from an Earl Stahl rubber-powered Spitfire that had been published



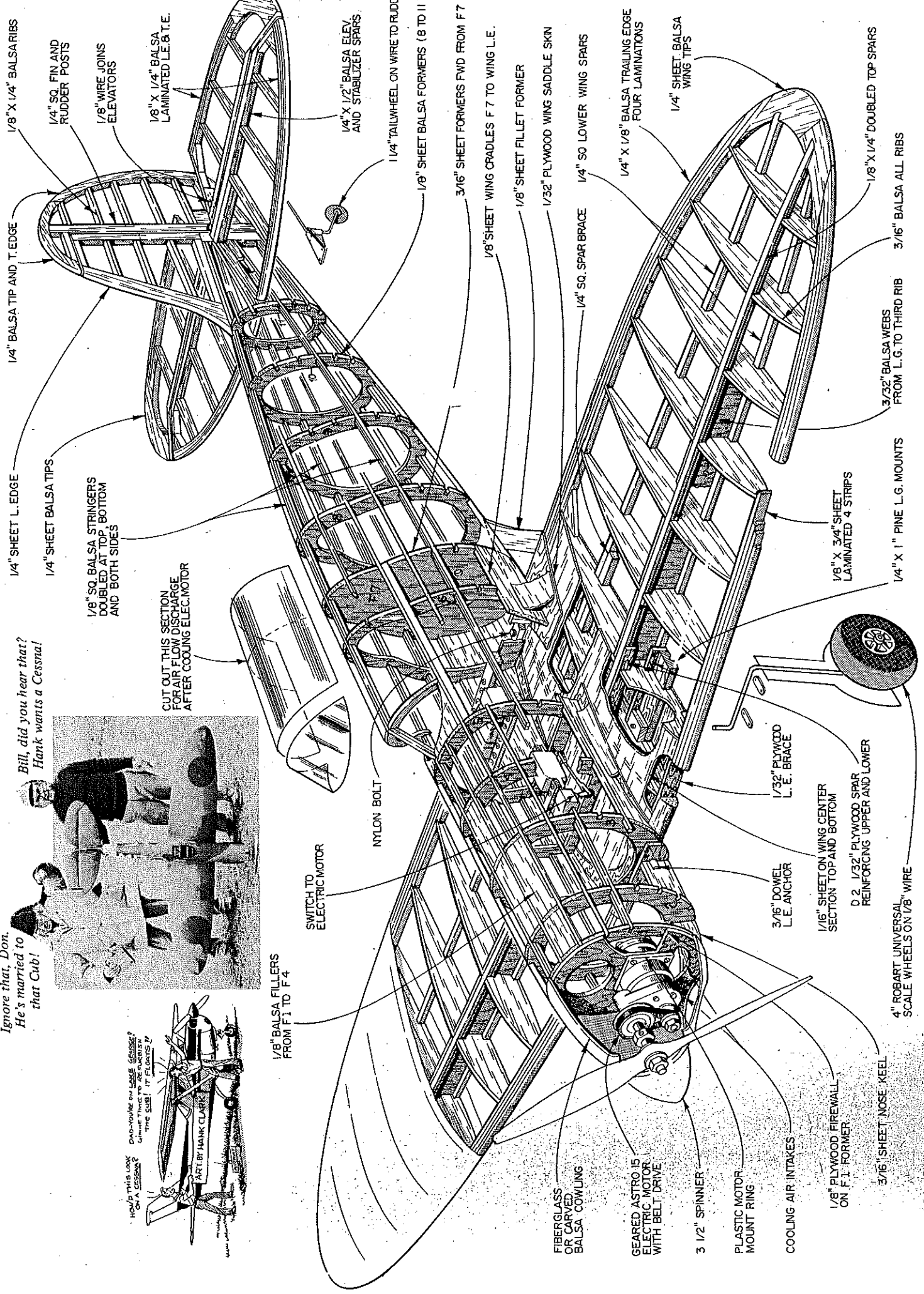
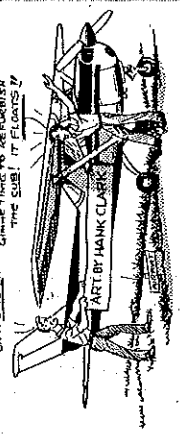
Clean lines and ample wing area of the Spitfire makes it an ideal subject for electric Scale from WW II. Fine performance on glow, too.

Ignore that, Don.  
He's married to  
that Cub!

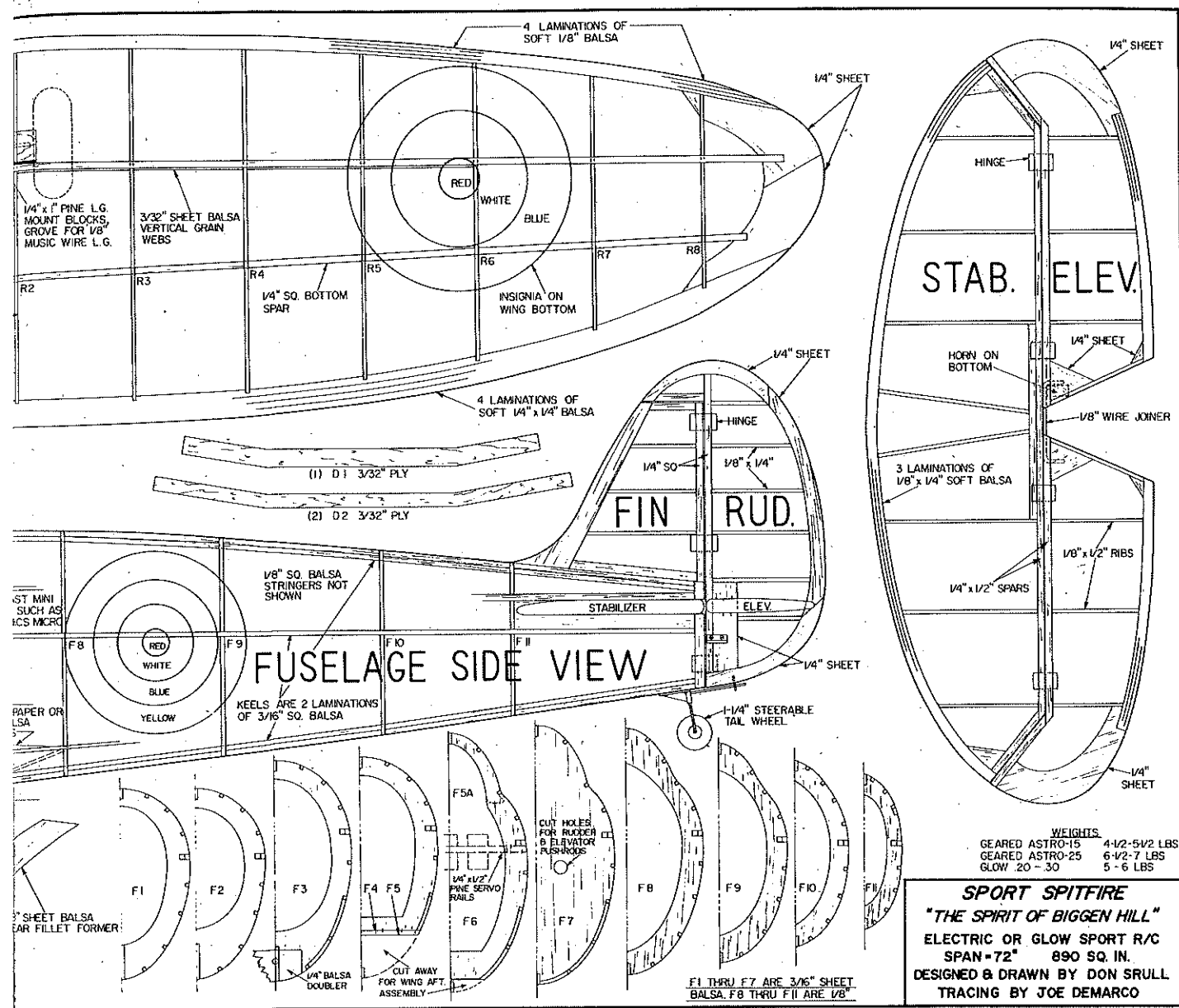


Bill, did you hear that?  
Hank wants a Cessna!

Head in this look  
Don-remember my LAKE ESCAPE?  
Gone with the wind...  
THE SUB! IT FLIES! IT  
ART BY HANK CLARK



- 1/8" X 1/4" BALSARIBS
- 1/4" SQ. FIN AND RUDDER POSTS
- 1/8" WIRE JOINS ELEVATORS
- 1/8" X 1/4" Balsa LAMINATED LE & T.E.
- 1/4" X 1/2" Balsa ELEV. AND STABILIZER SPARS.
- 1/4" TAILWHEEL ON WIRE TO RUDDER
- 1/8" SHEET Balsa FORMERS (8 TO 11)
- 3/16" SHEET FORMERS FWD FROM F 7
- 1/8" SHEET WING CRADLES F 7 TO WING L.E.
- 1/8" SHEET FILLET FORMER
- 1/32" PLYWOOD WING SADDLE SKIN
- 1/4" SQ. SPAR BRACE
- 1/4" X 1/8" Balsa TRAILING EDGE FOUR LAMINATIONS
- 1/4" SHEET Balsa WING TIPS
- 1/8" X 1/4" DOUBLED TOP SPARS
- 3/16" Balsa ALL RIBS
- 3/32" Balsa WEBS FROM L.G. TO THIRD RIB
- 1/4" X 1" PINE L.G. MOUNTS
- 1/8" X 3/4" SHEET LAMINATED 4 STRIPS
- 1/8" SQ. Balsa STRINGERS DOUBLED AT TOP, BOTTOM AND BOTH SIDES
- 1/4" SHEET Balsa TIPS
- 1/4" SHEET L. EDGE
- 1/4" Balsa TIP AND T. EDGE
- CUT OUT THIS SECTION FOR AIR FLOW DISCHARGE AFTER COUING ELEC. MOTOR
- NYLON BOLT
- SWITCH TO ELECTRIC MOTOR
- 1/8" Balsa FILLERS FROM F1 TO F 4
- 1/32" PLYWOOD L.E. BRACE
- 3/16" DOWEL L.E. ANCHOR
- 1/16" SHEET WING CENTER SECTION TOP AND BOTTOM
- D. 2. 1/32" PLYWOOD SPAR REINFORCING UPPER AND LOWER
- 4" ROBERT UNIVERSAL SCALE WHEELS ON 1/8" WIRE
- 3/16" SHEET NOSE KEEL
- 1/8" PLYWOOD FIREWALL ON F 1 FORMER
- COOLING AIR INTAKES
- 1/8" X 1/4" Balsa TRAILING EDGE FOUR LAMINATIONS
- 1/4" X 1/8" Balsa TRAILING EDGE FOUR LAMINATIONS
- 1/4" SHEET Balsa WING TIPS
- 1/8" X 1/4" DOUBLED TOP SPARS
- 3/16" Balsa ALL RIBS
- 3/32" Balsa WEBS FROM L.G. TO THIRD RIB
- 1/4" X 1" PINE L.G. MOUNTS
- 1/8" X 3/4" SHEET LAMINATED 4 STRIPS
- 1/32" PLYWOOD L.E. BRACE
- 3/16" DOWEL L.E. ANCHOR
- 1/16" SHEET WING CENTER SECTION TOP AND BOTTOM
- D. 2. 1/32" PLYWOOD SPAR REINFORCING UPPER AND LOWER
- 4" ROBERT UNIVERSAL SCALE WHEELS ON 1/8" WIRE
- 3/16" SHEET NOSE KEEL
- 1/8" PLYWOOD FIREWALL ON F 1 FORMER
- COOLING AIR INTAKES
- PLASTIC MOTOR MOUNT RING
- 3 1/2" SPINNER
- GEARED ASTRO 15 ELECTRIC MOTOR WITH BELT DRIVE
- FIBERGLASS OR CARVED Balsa COWLING



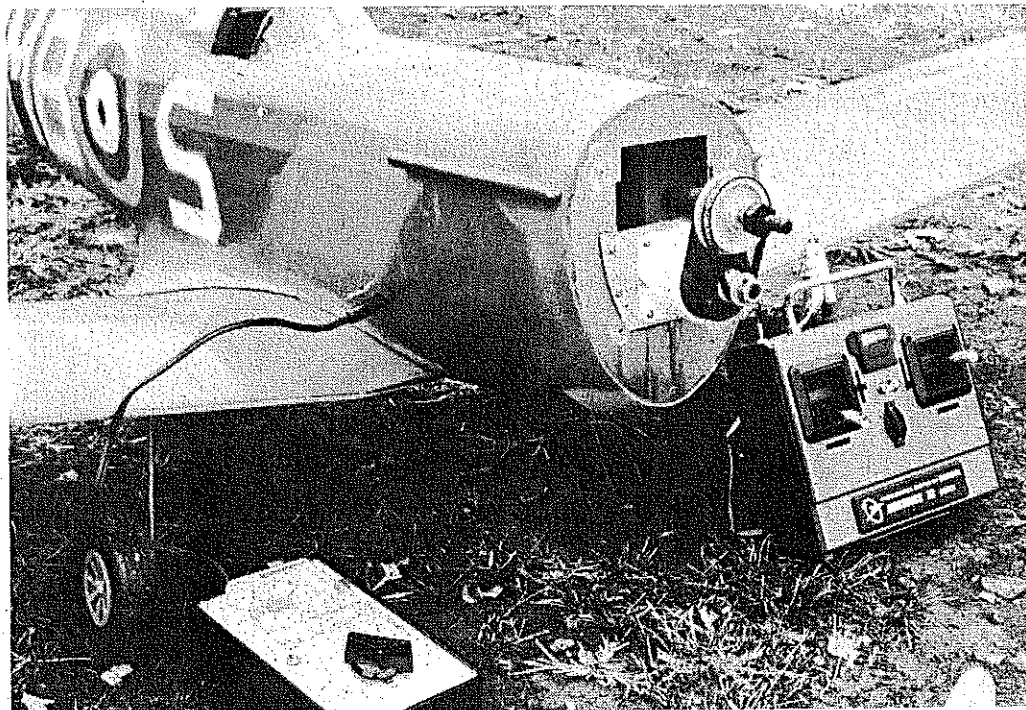
installed and ready, using a set of Bill's Airtronics mini-servos and his spare XL receiver. Since the model was a little bit beefier than necessary, it weighed a bit more than optimum for the geared Astro 15. But fly it did, and we were amazed.

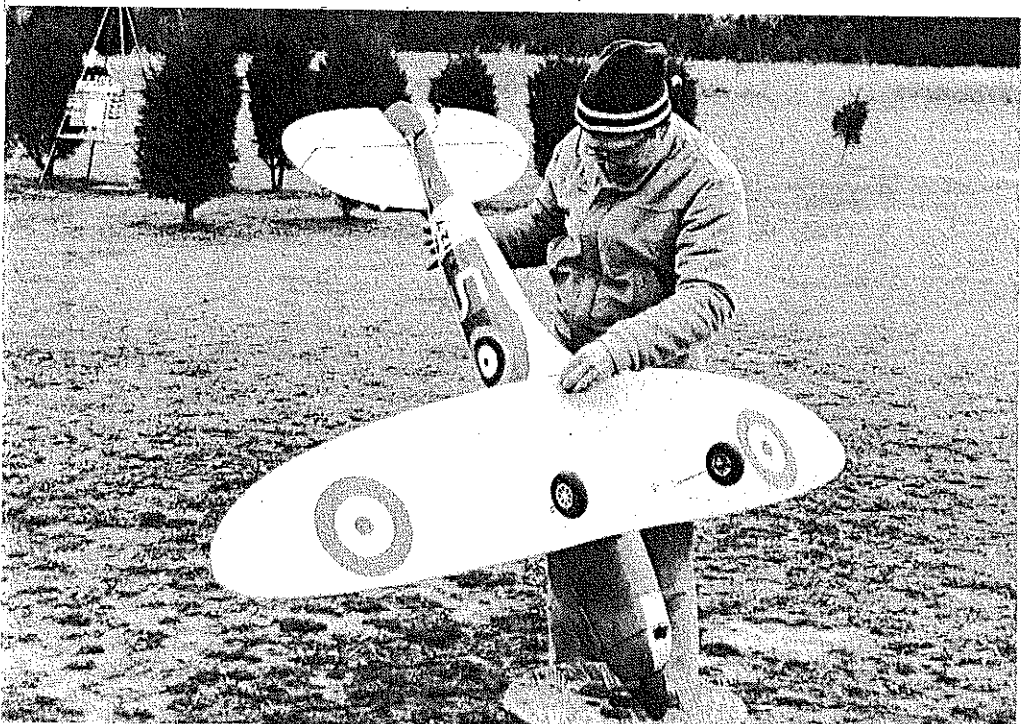
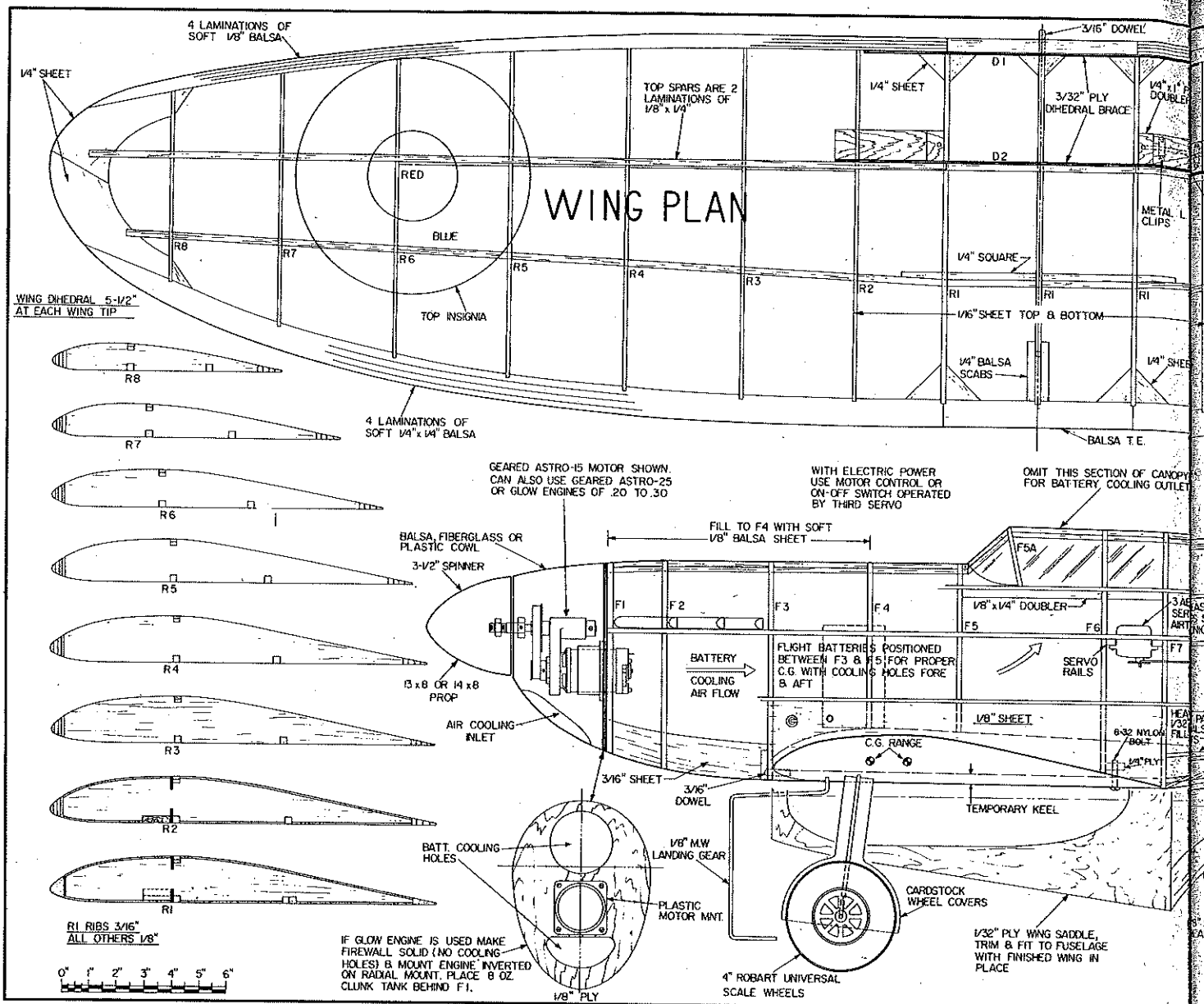
You can build this fine sport airplane for either a glow engine or an electric motor, and it will provide you with a conversation piece at any flying site. It will be somewhat lighter as a glow-engine model, and it will have more snappy performance. With electric, however, you can enjoy all the benefits of silent flight; no engine starting problems or exhaust mess, either.

Since I assume anyone who'd tackle a project like this knows the basics of building models, I won't indulge in a now-glue-this-to-that spiel. Instead we'll take you for a guided tour of the less-than-obvious things you will need to know.

**General notes.** At the time my son built this model, the cyanoacrylate super glues were not around, but you can save quite a bit of time and a little bit of weight by using Super Jet, Hot Stuff, etc. We would highly recommend them. The model has a lot of surface area, so use Super

Polarized plugs and an automatic timer built into the charger make for a simple, foolproof system. Note the location of the charging jack. Fifteen minutes is all it takes.



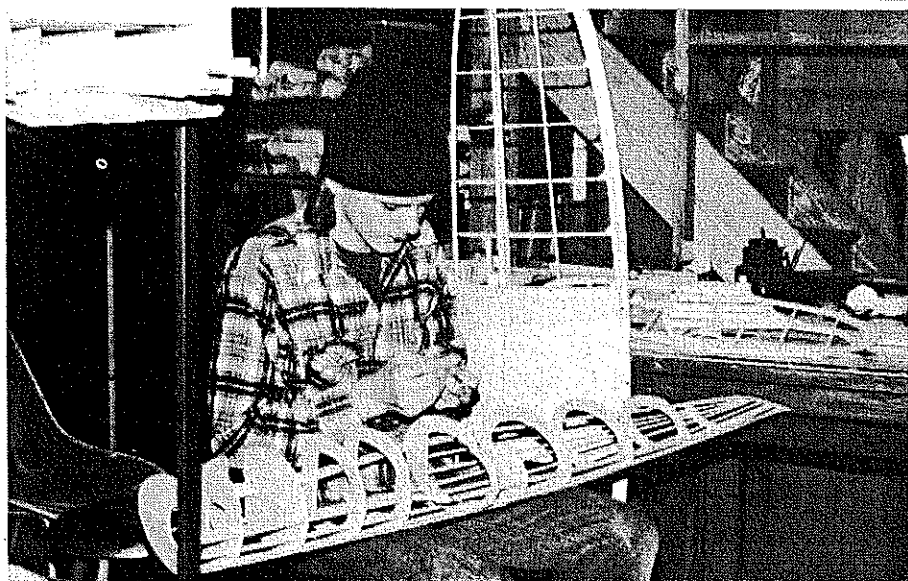


years ago in *Model Airplane News*. It was basically a six-foot, gas-powered "ghost ship" employing rubber modeling and Free Flight techniques. Power was a .23 glow engine; using three channels for control, it had a respectable amount of speed and could cruise on two-thirds power. It would float in for landings, and touch-and-goes were a cinch. After a couple of years of use, it was hung up in a remote corner of the basement.

Enter Bill Winter, who has a fascination with unique and off-beat modeling things. Every time Bill visited our shop, he'd wander over to that dark corner and gaze for minutes at the Spitfire. Then one night he arrived with his new geared Astro Flight 15 system which he was going to use (and still plans to use) in Astro's six-foot Porterfield kit. The geared 15 is a fascinating gadget and Bill was anxious to test it out in a model. In a rash moment I said, "Why don't we try the electric system in the Spitfire?"

For months we discussed the possibilities. Would it fly? How would it fly? Would it take off from the ground? There was only one way to find out, so the next time Bill appeared I had it

Two nylon bolts are all it takes to set up the electric Spitfire for flying. Charging the flight batteries is done through a jack on the lower fuselage near the wing.



Author's son at work on the Spitfire. Note standard wing construction, stringers and formers for fuselage. This model was gas-powered at first, and came out about a pound heavier than it had to be.



The Spitfire fuels up between flights. Connect the charger to the plane and to your car battery, set the timer to 15 minutes, and walk away. Full charge gives about eight minutes' flying.

Up, up and away on one of the early test flights, minus the cowl and spinner. No heating problems were found when these were added later; there's plenty of air circulation.

MonoKote or some other lightweight material for covering for minimum weight. Super Mono-Kote also has the correct matte colors for a scale-like finish. Be aware that typical fabric covering and paint job could add so much weight as to render the ship unflyable on the Astro 15. With a glow engine or the Astro 25, the extra weight would not be so critical.

We highly recommend the book *The Silent Revolution* published by Astro Flight. It contains everything you need to know about systems, sizes, and weights of planes suitable for electric power. We gambled somewhat on this Spitfire, because it was almost one pound heavier than the recommended gross. (The version shown on the plans should save 1/2 lb. or more as compared to our prototype.) The Spit's generous wing area, however, yielded a wing loading that was in the ball park recommended by people like Boucher, Poling, and Kopski—all of whom, incidentally, held crossed fingers until the first test flight.

There are some special requirements to look out for if you are going electric. The system should have a fuse, even if you have a shut-off operated by RC. Without a fuse, a snagged prop on a botched takeoff or landing could damage the motor or batteries before you get the motor turned off. By all means, do use a motor cut-off or a speed control. We used an inexpensive three-position switch from Astro Flight (it comes with appropriate resistor) which provides high, cruise, and off motor control. It is operated by the motor control servo.

You must provide adequate cooling airflow for motor and batteries, so follow the plans. On this model the cooling air is exhausted through the open cockpit; cooling air is taken in through openings in the firewall. The batteries in our ship never get very hot—you can hold a finger on them at the end of a flight.

It's very important to find and use the right prop with electric power. Use the size that the instructions recommend as a start, but experiment a little to find the optimum prop for your particular model. In general, the pitch required is rather high; at least 8 in. in the case of the Spitfire. The belt drive means that the unit puts out about half the normal rpm but twice the torque as compared to the ungeared motor. This means we can use a large diameter, high pitch prop.

On a 12-6 we found that the Spit wouldn't take off, but on a 12-8 it came alive. We should get even better performance on a 13-8, but this hadn't been tried when the article was written. Nor had we flown the geared Astro Flight 25 motor, which should provide a terrific increase in performance. Gross weight would increase about a pound, but the much greater power of the 25 should fire up the Spitfire, perhaps even yield modest aerobatic capabilities.

**Construction notes.** Use lightweight balsa throughout except as noted. The fuselage is built by the "half shell" method. The top and bottom keel pieces are laminated on the plans from two pieces of 3/16 square balsa strip. Bulkheads are added next. Note that the side keels are also laminated from two pieces of 3/16 square balsa.

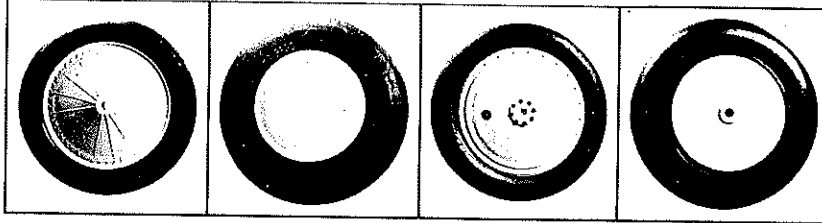
For all laminating, first dampen the wood with water, and then use white glue or Titebond, thinned 50-50 with water, to cement the pieces together. You can also add the 1/8 square stringers on the half shell while it is on the plan.

Remove the completed side from the board and complete the other side. Glue on the 1/8 ply

*Continued on page 114*

# SCALE WHEELS

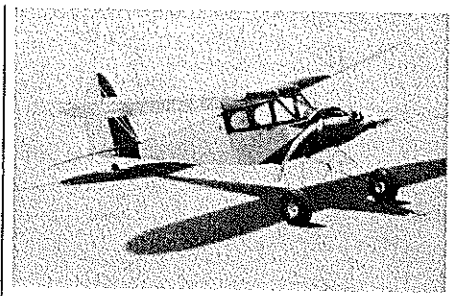
RADIO CONTROL • CONTROL-LINE • FREE-FLIGHT



VINTAGE		SMOOTH CONTOUR		GOLDEN AGE		NEW BALLOON	
sizes:	2 1/2"	3/4"	2 3/4"	sizes:	2 1/2"		
	3 1/8"	1"	3 1/4"		3/4"	3 1/8"	
	1"	1 1/4"	3 3/4"		1"	3 3/4"	2 1/2"
	1 1/4"	1 1/2"	4 1/2"		1 1/4"	4 3/8"	4 1/2"
	1 1/2"	2 1/4"	5 1/4"		1 1/2"	5"	5 1/4"
	1 3/8"				1 7/8"	6 1/2"	3 3/4"

SCALE PILOTS • CYLINDERS • ENGINE KITS  
MACHINE GUN KITS • PLASTIC DISPLAY MODELS

SEND \$1 FOR COMPLETE ILLUSTRATED CATALOG  
DEPT. MA • 181 PAWNEE ST., SAN MARCOS, CA. • 92069



Would you believe a Quaker Flash with 277 flights (as of May 19) and 92 hours logged time? D.G. Marshall, an airline man, quotes hours, not flights. This dream machine, powered with a K&B .35, beefed up to stand high times and rough ground handling, was stolen with all equipment from Marshall's station wagon. So many radios and things have been ripped off that Bill mumbles, "Rip off everything, it is only America, fellows; it's time for Sting." Don has another (no time to fly it) and a third being covered, for K&B .61 pumper! It is so big he can't find wheels large enough, so may put it on floats. Don "runs them rich so they don't cook" and "keeps them light in spite of going for durability." The one pictured spans 7 ft. and has a 12-oz. tank. Throttle that back, but be sure to bring a recliner, sun umbrella, and plenty of iced tea (maybe a 1,000 mAh pack?).

## Charlie's 1981 Accessories

## Charlie's R/C GOODIES

(213) 764-1490

P.O. BOX 192 • VAN NUYS, CA. 91408

This month Charlie is offering SPECIAL PRICES on several accessory items. Regular prices are shown in small type; BARGAIN PRICES are shown in heavy type.

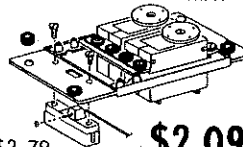
R/C SAFETY CAPS \$8.95



Hi Visibility 2-Color Caps match your 72 MHz Freq. (Specify) One size fits all.

**\$6.50** Shipping \$1.25

UNIVERSAL SERVO TRAY



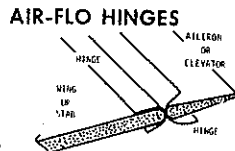
\$2.79 **\$2.09**

2+1 tray for Bantam, Cannon CE-3, CE-4, CE-5, Futaba, Kraft KPS-12, Midget servos. Mtg. hardware included.



Replaces glow head on TD .049, .051, Golden Bee, etc. Uses standard 1/4-32 glow plug.

**\$1.59** \$2.19



Iron on Hinges, easy to install. Strips 36" lg.

SMALL (1") LARGE (1-1/2")

**\$1.39** **\$1.59**



FREQUENCY FLAGS

Detachable holder, polyester ribbons. All Freq. colors.

99¢ **69¢**



\$25.00

OR MORE

Add 75¢ Shipping (Except Caps). Calif. Residents add Sales Tax. Catalog - 60¢ U.S.A. (\$1.70 Foreign).

## QUICK 'N EASY CUT-OUT PATTERN-PLANS

Can be Cut & Assembled in One Evening

Stand-Up Flight Box  
**\$6.95**



No Measuring Needed!  
**TO BUILD**  
Trace - Cut - Assemble  
DESIGNED TO HOLD:  
Fuel tank + Pump + Trans.  
Starter - Battery-Fuse Hold  
(adj.) Tools, etc., Legs  
Removable 21" x 12" x 39"

Send to:  
**SELECT - A - PRODUCTS**  
P.O. Box 259  
Palo Cedro, CA 96073

## THE FANTASTIC NELSON .15!

For detailed brochure, send 25 cents to:  
**Kustom Kraftsmanship**  
P.O. Box 2699  
Laguna Hills, CA 92653  
Ph: (714) 830-5162

Dealer Inquiries Invited

Bill Winter, 4330 Alta Vista Dr., Fairfax, VA 22030.

## Electric Spitfire/Srull

Continued from page 26

firewall, making sure it is squared up accurately to the fuselage. Fill in the nose section between stringers with light, soft 1/8 sheet balsa. The wing saddle and fillets will be completed after the wing has been built.

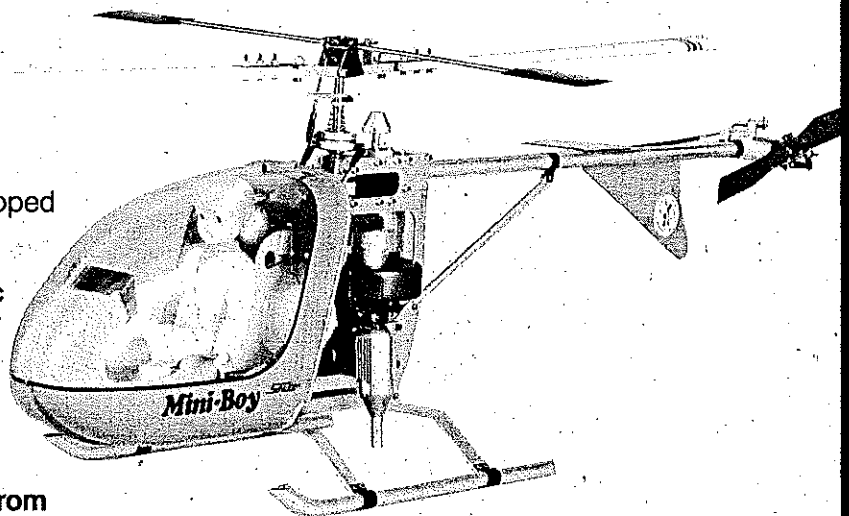
Wing and Tail. Note that the leading and trailing edges of the wing and stab are laminated from soft balsa strip. Moisten the strips, and join with thinned white glue as with the fuselage keels. Bend the stack of strips into shape right over the



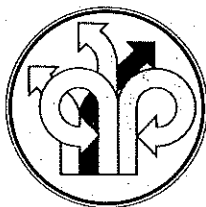
Dieter Schluter world famous helicopter designer presents *the all new*  
**Mini-Boy & Super Mini-Boy**  
 Show Sensation - Toledo & Mac's

**Features:**

- .25 to .40 convertible
- Cyclone fan cooling
- No heat sinks needed
- Spinner starting
- Shaft drive tail rotor
- "Factory" researched & developed
- Choice of Flapping hinges
- Seesaw or Collective heads
- Rock stable yet fully aerobatic
- World famous Schluter quality
- Non Collective 199.95
- Collective 229.95
- All parts in stock
- World standard metrics



See your dealer or order direct from



**Schluter U.S.A., Inc.**

a subsidiary of

**MINIATURE AIRCRAFT**

2594 North Orange Blossom Trail • Orlando, FL 32804

Phone: 305/422-1531

plans, using small nails or brads to hold them in place while they dry. Since the bends are gentle, the laminations will form quite easily.

After adding the ribs to the wing, add the upper 1/4 square spar. This spar is laminated from two strips of 1/8 x 1/4 in. balsa. Although the wing is assembled flat on the bench, the top spar does bend downward toward the tips. Wet both pieces with water; place one lamination in the rib notches, then glue the top lamination to it. Be sure to install the 3/32 vertical grain spar webs as shown on the plans, as they add considerable strength to the wing.

The tail surfaces are built up from 1/4 strip balsa and 1/4 sheet balsa tip segments.

After adding dihedral to the wing and sheeting the center section with 1/16 sheet balsa, we can return to the fuselage to complete the wing saddle. Glue the 1/32 ply wing rest to the fuselage with the wing in place to provide the proper shape. Trim the fuselage sheeting as necessary to get a good wing-to-saddle fit. Finally, add a heavy paper or 1/16 balsa sheet wing fillet between the fuselage and the ply saddle. Don't use the usual epoxy putty or resin and microballoons for the fillets—this materials are too heavy.

**Covering and finishing.** Since we are trying to make everything as light as possible, the best way to go is Super MonoKote or a similar lightweight covering. The bottom of the wing, tail, and fuselage is covered with flat Dove Gray, while the top of the plane is covered in flat Olive Drab. The upper surfaces are camouflaged with a coat of flat tan or light earth enamel or epoxy. Suitable paints include Pactra Military Flats (in the spray can), RS Perfect Paint, K&B, or Hobbyoxy.

Before spraying, wipe the surface of the Mono-

Kote with thinner or acetone to remove any trace of grease or oil. After the camouflage pattern has been painted, mask and spray the roundels and numbers. Do not use masking tape for masking the markings; when you remove the tape, adjacent colors will probably be lifted off. I made stencils from newspaper; just wet the paper, slide the wet stencil in place, and spray. Simple, and it worked fine.

**Miscellaneous.** All structural details are standard and called out on the plan, such as the landing gear mounting blocks, the wing hold-on dowel, and the nylon bolt. The nose cowl can be built up from balsa blocks and sheet as was ours, or you can make a fiberglass one (keep it light), or vacuum-form one out of sheet plastic. Light cardboard landing gear covers attached to the landing gear legs with silicone glue add the final touch, and we are ready to fly.

**Flying Notes.** Before flying, make sure the CG is in the right place and the wing has no warps. With a wing that big, you don't want the slightest warp. Reheating the covering and twisting the offending surface is a simple cure.

It is advisable to make some fast taxi tests before flight. It will help you get the feel of the airplane before the first takeoff. Begin the takeoff run holding up elevator to prevent a nose-over as throttle is gunned. As soon as some speed is built up, relax to neutral. The plane may fly off by itself, or it may require a slight bit of up elevator to help rotation.

For good duration with the Astro 15; don't indulge in steep turns or altitude-losing maneuvers. Gentle, wide turns will retain altitude and give you maximum flight time. For taxiing to position or back to the pits, the on-off switch is used as necessary, and it is very effective. We

have our motor servo set up so that full power is forward throttle control, halfway back gives cruise power, and full back on the stick shuts off the motor.

Flying the Spitfire is a beautiful experience. It's a unique mixture of Scale, Soaring, RC, and Free Flight all in one. Don't look for the usual gas model performance, though. If you wish to tear up the skies, you are better off with the usual noisy and greasy bombs. (I'm not knocking that kind of flying, mind you, since much of my RC fun fits that category.)

This lightly-loaded Scale electric stuff is a new and refreshing change of pace. But don't forget this ship also does a nice relaxed job of sport flying with a glow engine, if scale realism and something like scale speed are appreciated. In either case, the sport Spit on a calm summer evening is something to behold. If you can build light, you'll love it.

## Big Bangers/Beckman-Crawford

*Continued from page 38*

Lauderdale, FL 33312 (Husky).

Top Flite Models, Inc., 1901 Narragansett Ave., Chicago, IL 60639.

Now let's get to our notes and subjective comments about the four engines tested this time.

**Homelite 1.6.** This engine is not currently available in directly usable form, but it is fairly easy to convert (several are in use around the country), and we have had many inquiries about it—since Kirby and I both use it. As far as we

*Continued on page 118*